

WE ARE PIONEER GROUP

BIOCITY

BioCity provides a home to the curious, to the radicals and the pioneers tackling the challenges that affect us all, globally.

The first dedicated life science incubator in the UK, BioCity Nottingham is now one of the UK's largest bioscience incubators and home to over 60 companies. Which, over a 12-year period, experienced an industry-defying 91% survival rate.

BioCity Nottingham is part of the largest community of science and tech businesses in Europe, following the landmark acquisition of BioCity Group and formation of We are Pioneer Group (WAPG) in 2021. WAPG surround pioneering science and tech ventures with the resources, expertise and opportunities to launch, scale and grow. With Start-Up and Scale-Up programmes, hassle-free property, VC funding and mentorship through the Expert Network, WAPG support businesses from idea to IPO.

MEDICITY

Proudly part of WAPG, MediCity Nottingham is home to the pioneers of Med Tech. Based within the Boots UK's headquarters, companies based at MediCity benefit from proximity to the UK's leading health and beauty retailer, showcasing their products and services to leaders and decision makers within Boots.

THE WAPG BUSINESS ACCELERATOR PROGRAMME

This business accelerator programme has been designed specifically for life science entrepreneurs to help stress test their business models. WAPG offer an eight-week programme designed to help identify customers and launch a business from science. You're given a mentor, access to the Expert Network and if successful, convertible loans and free office space is offered to kick start your business.

£50k convertible loan to the most promising ventures

Direct route to raising investment

Coaching in the most innovative tools to help you grow

Connecting you to an extensive network

Up to £50k of support for 12 months

Virtual or physical lab or office space for up to 12 months

BIOCITY EXPERT NETWORK

One of the major benefits of BioCity is access to their Expert Network. A wealth of knowledge and expertise in life science and business is accessible to help tackle growth and scaleup challenges.

SYGNATURE DISCOVERY

Sygnature Discovery was founded in 2004 at BioCity Nottingham with just 4 chemists. They now have over 450 employees working in its purpose-built Discovery Building at BioCity Nottingham and are leading the way in providing integrated drug discovery resource and expertise.

NOTTINGHAM LIFE SCIENCES

Over **75,000** students studying in Nottingham each year

One of the UK's largest teaching hospitals

13 universities within an hour of the city

10,000+ people employed in life sciences...

This number has grown **35%** over the past 5 years

and it's going up!

3rd largest Medtech cluster outside of London

MEDICAL TECHNOLOGIES INNOVATION FACILITY

Medical Technologies Innovation Facility (MTIF) offers 'bench to bedside' research and development services for innovative medical technologies, cell and tissue therapies and pharmaceuticals. MTIF has bases on the Nottingham Enterprise Zone and Nottingham Trent University's campus, so provides strong links to both research and development, and Boots, one of the largest retail pharmacies in the world.

RESEARCH CENTRES AND CLINICAL TRIALS

Nottingham provides an environment to trial your product effectively, safely, and quickly. We have a range of research centres and clinical trial facilities with experienced and knowledgeable staff here to help develop your product.

Nottingham University Hospitals Trust is one of the best in UK for clinical trials, and we have countless companies and research centres here to assist you with your trials and development.

On the right are some of the highlights.

Nottingham is an ambitious city in the heart of the UK, with an independent spirit. We aren't afraid to do things differently and disrupt the status quo. A city known for its resilience and its innovation where leaders are born, and legends are made.

We're on a mission to become the UK's first Carbon Neutral city in 2028, and second neutral city in Europe.

Nottingham is the biggest business centre in the East Midlands with access to a 2.4-million-person workforce in our journey to work area. Life Sciences has been at the heart of our knowledge-driven economy for 200 years, we're the third largest MedTech cluster outside of London.

From bench to bedside, whether you're a start-up or MedTech giant, everything is possible within Nottingham.

ACCESS TO MARKET AND LOGISTICS

Once your product is ready for market, Nottingham is the perfect place to launch. We're right in the heart of the UK with over 89% of the population reachable within a 4-hour truck drive. Nottinghamshire has great access to two of Britain's major roads, the M1 and A1.

For exporting your product abroad, East Midlands Airport is right next door, it's the largest sole cargo airport in the UK and they process over 1 million parcels a night.

NOTTINGHAM SCIENCE PARK

Strategically located between academia and industry with Boots on one side and University of Nottingham on the other side. Nottingham Science Park offers a range of facilities from research and development space through to high quality grade A office space.

A STRONG ECOSYSTEM

One of Nottingham's biggest strengths is our thriving ecosystem with access to incubators, talent, knowledge, and research all in one place.

MAJOR STRENGTHS

Cancer Research

MedTech

Drug Discovery

Contract Research

DISCOVERIES IN NOTTINGHAM

IBUPROFEN

MRI SCANNER

IBUPROFEN

Ibuprofen was invented in Nottingham in the 1960s by Dr Stewart Adams and colleagues at Boots Laboratories. Ibuprofen has since marked a turning point in non-steroidal anti-inflammatory drug design, is now on the World Health Organization's Model List of Essential Medicines and is one of the world's best-selling drugs. The stories of Dr Adams development of the drug, and how he tested it on himself to treat a hangover, have become part of pharmacological folklore.

MRI SCANNER

The MRI Scanner was developed in Nottingham by Sir Peter Mansfield and team at the University of Nottingham. Mansfield was instrumental in discovering how Magnetic Resonance Imaging could be converted into usable images, and in 1978, carried out the first body scan in his prototype MRI machine. Sir Peter Mansfield received the Nobel Prize for Medicine in 2003, for his contribution to the invention of MRI.

Interdisciplinary Biomedical Research Facility

This research facility provides biomedical research activities in immunology, cell-based therapy, bio-materials science, neuroscience, pharmacology and toxicology.

Nottingham Clinical Research Facility

Provides space, equipment, and skilled staff to support research in experimental medicine at Nottingham University Hospitals.

Nottingham Biomedical Research Centre (BRC)

A national clinical trials centre staffed by university and Nottingham Hospitals Trust academics with specialities in Gastroenterology, Hearing, Musculoskeletal, Mental Health and Respiratory Medicine. This centre was also a centre of evaluation for Covid 19 vaccines.

Nottingham Precision Imaging Beacon

A leading centre in the application of MRI based at the site of the development of this landmark imaging technique.

Nottingham School of Medicine Division of Cancer and Stem Cells

A teaching and research speciality division with multi-disease interests, focussing on cancer.

NOTTINGHAM LIFE SCIENCES

Nottingham has been pioneering the Life Science industry for 200 years, since pharmaceutical giant Boots first opened its doors. We're the home of invention and discovery, Ibuprofen and the MRI scanner were developed here.

We now have a thriving, knowledge-based ecosystem with research, discovery and business growth happening here.



10,000+
people employed
in life sciences

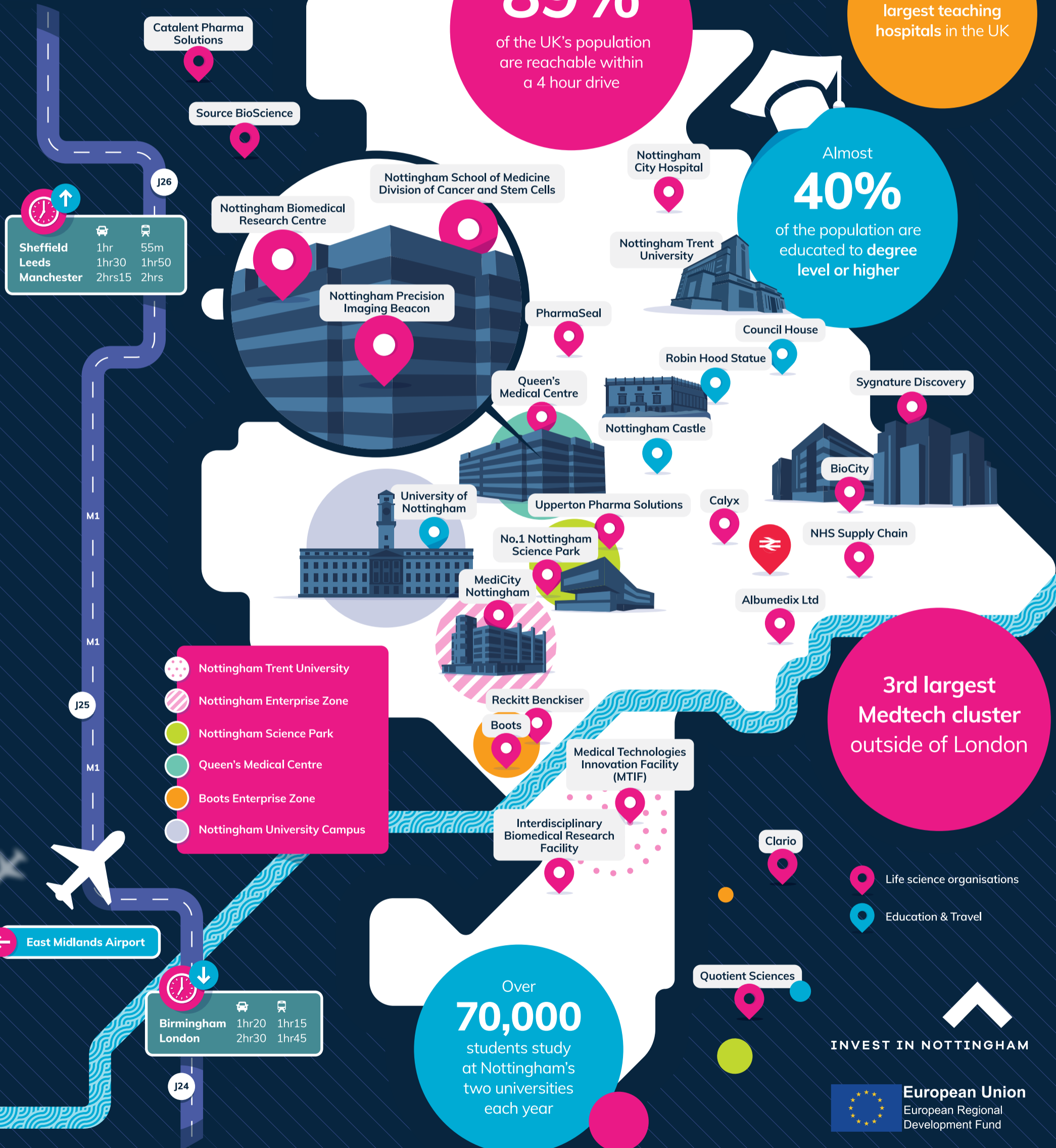
89%
of the UK's population
are reachable within
a 4 hour drive

Home to one of the
largest teaching
hospitals in the UK

Almost
40%
of the population are
educated to degree
level or higher

**3rd largest
Medtech cluster
outside of London**

Over
70,000
students study
at Nottingham's
two universities
each year



	Car	Train
Sheffield	1hr	55m
Leeds	1hr30	1hr50
Manchester	2hrs15	2hrs

	Car	Train
Birmingham	1hr20	1hr15
London	2hr30	1hr45

INVEST IN NOTTINGHAM



enquiries@investinnottingham.com
investinnottingham.com
@InvestinNottm